

MCO avec
Rudder/Rundeck
Racktable/Itop
J-EOLE/J-SR

31 mai 2017



Nicolas Schont, Rectorat de Versailles



Logiciels déployés dans le SI

- Rudder
 - Audit & Configuration continus
- Rundeck
 - Ordonnanceur, import via API des serveurs, groupes, OS ... de Rudder
- Itop
 - CMDB
 - Intégration des données de Rudder, Esxi, Proxmox
- Racktables
 - Cartographie du datacenter
 - Intégration des données de itop
 - Intégration des données de OpenManage (en cours)
 - Intégration des données de Netdisco (en cours)
- Mattermost
 - Travail en équipes
 - Gestion de webhooks avec les machines
 - Retours des Jobs Rundeck via des webhooks
- Gitlab
 - Gestion des versions



En *concurrency* avec

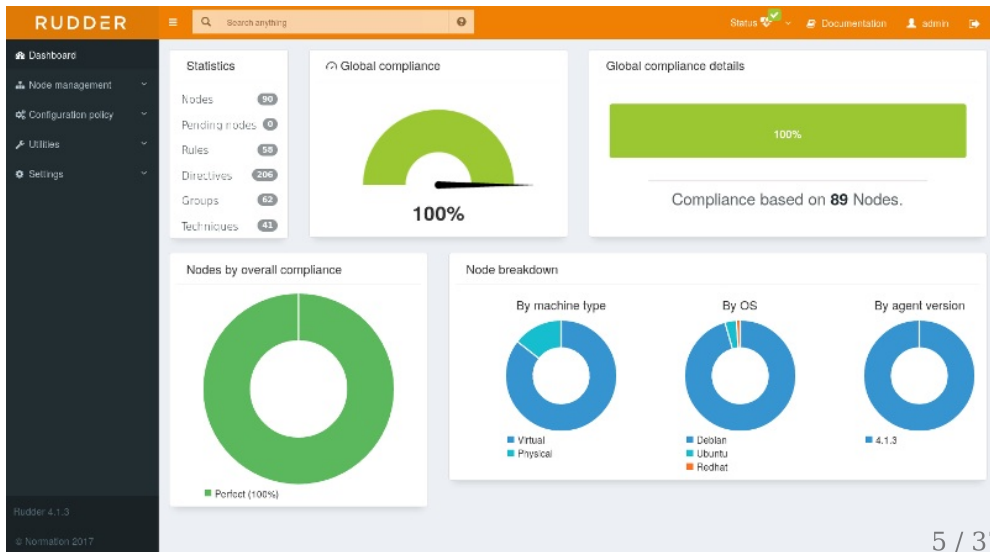
- Puppet
- Chef
- Saltstack
- Ansible

Langage/syntaxe à connaître -> Coût d'apprentissage plus important

Pour visualiser les conformités et les inventaires il faut des logiciels supplémentaires

Une interface pour les contrôler tous

- Pratique pour les DSI avec un fort "turn over"
- Profil technique faible possible
- Délégation en lecture seule pour certaines personnes



La même avec des erreurs

La vérification des configuration est faite et remonte dans le *dashboard* toute les **5mn**



Les différentes briques

- Serveur central (Debian/Redhat/Suse)
- Des relais (Debian/Redhat/Suse) pour différentes zones
- Une API pour gérer plein de choses
- Un agent autonome sur les serveurs clients (Windows(DSC)/Debian/Redhat/Suse/Aix)

Les ports

- 443 (https)
- 514 (Syslog)
- 5309 (Cfengine)

- Le tout vers le serveur central/relais donc pas d'ouverture de ports en entrée sur les serveurs clients
- Un noeud ne joignant plus son relais ou le serveur central continu d'appliquer la dernière configuration connue

Des rôles

- Par défaut
 - Administrateur
 - Administration only
 - User
 - Configuration
 - Read only
 - Inventory
 - Rule only
- Des personnalisations
 - A permission is composed of a type and a level: Type: Indicates what kind of data will be displayed and/or can be set/updated by the user "configuration", "rule", "directive", "technique", "node", "group", "administration", "deployment".
 - Level: Access level to be granted on the related type "read", "write", "edit", "all" (Can read, write, and edit)

Authentification des gestionnaires via LDAP (utilisé à versailles) et SSO
CAS/open ID (pas utilisé à Versailles)



Gestion des configurations

Des techniques



Création de directives

▼ Debian/Ubuntu packages #1

Package name syslog-ng

Allow untrusted package installation No
 Yes

Action to perform on this package Install only (don't update)
 Update only (don't install)
 Remove

▼ Section: Package version

Define package version to install Use package manager default version
 Define version criteria below

Package version match

Package version number - Optional

Delete 'Debian/Ubuntu packages #1'

Add another 'Debian/Ubuntu packages'

- Hooks de post et pré configuration

Gestion des groupes de machines

dynamique ou statique

Group type
 Dynamic Static

Group description

Rudder ID
b1274b97-4dae-4897-eddb-ee0ddb55193

[Display agent classes](#)

Group criteria

Include Rudder server components:

Match the criteria below with this operand: AND OR

Software Name = mariadb-server - +
Software Name = mysql-server - +

Node name	Machine type	OS name	OS version	OS SP	Policy Mode	Compliance	Last seen
varda-4.in.ac-versailles.fr	Virtual	Debian	7.11	N/A	Enforce	100%	2017-05-29 12:32
varda-3.in.ac-versailles.fr	Virtual	Debian	7.5	N/A	Enforce	100%	2017-05-29 12:32

Gestion des groupes de machines

avec des Regex

Group type

Dynamic Static

Group description

Rudder ID

a537e086-07a2-42be-9056-b490929ea60

[Display agent classes](#) ▶

Group criteria

Include Rudder server components:

Match the criteria below with this operand: AND OR

Node summary Hostname Regex `wordpress-srv-[1-9]`

Node name	Machine type	OS name	OS version	OS SP	Policy Mode	Compliance	Last seen
wordpress-srv-2.in.ac-versailles.fr	Virtual	Debian	8.8	N/A	Enforce	<div style="width: 100%; background-color: #90EE90;">100%</div>	2017-05-29 12:37
wordpress-srv-1.in.ac-versailles.fr	Virtual	Debian	8.8	N/A	Enforce	<div style="width: 100%; background-color: #90EE90;">100%</div>	2017-05-29 12:37

Les règles

Mise en relation des groupes et des directives

▼ Target Rules

Filters ▼

Q Filter

Tags

key = value +

Categories ▼

Display Rules from subcategories

- Rules
 - apps
 - daftco
 - DB
 - physique
 - web

Rules Refresh

<input type="checkbox"/>	Name	Category	Status	Compliance	Recent changes
<input checked="" type="checkbox"/>	Enforce r_commun_debian_syslog-ng		In application	100%	
<input checked="" type="checkbox"/>	Enforce r_serveurs-dell-NFS-non-hyperviseur	physique	In application	100%	
<input type="checkbox"/>	Enforce r_frontaux-web-cms_jessie		In application	100%	
<input type="checkbox"/>	Enforce r_proxy-web1	web	In application	100%	
<input type="checkbox"/>	Enforce r_frontaux_pmb	web	In application	100%	
<input type="checkbox"/>	Enforce r_proxies_acad		In application	100%	
<input type="checkbox"/>	Enforce r_frontaux-web-JOOMLA	web	In application	100%	
<input type="checkbox"/>	Enforce r_git_interne		In application	100%	

Création de techniques avancées

Par des glisser/déposer création de techniques transverses

LIBRARY

Generic methods

Command

Command execution ¹
 Execute a command

Command execution result ²
 Execute a command and create outcome classes depending on its exit code

Condition

Condition from command ¹
 Execute a command and create outcome classes depending on its exit code

Condition from expression ¹
 Create a new condition class

Condition from expression persistent ¹
 Create a new condition class that persists across runs

Directory

Directory check exists ¹
 Checks if a directory exists

Directory create ¹
 Create a directory if it doesn't exist

File

File check is FIFO/Pipe ¹
 Checks if a file exists and is a FIFO/Pipe

File check if block device ¹
 Checks if a file exists and is a block device

File check if character device ¹
 Checks if a file exists and is a character device

File check exists ¹
 Checks if a file exists

File create ¹
 Create a file if it doesn't exist

Create symlink ¹
 This is a bundle to create a symlink at a destination path and pointing to a source target except if a file or directory already exists.

Create symlink (optional overwriting) ¹
 This is a bundle to create a symlink at a destination path and pointing to a source target. This is also possible to overwrite the creation.

Create symlink (force overwrite) ¹
 This is a bundle to create a symlink at a destination path and pointing to a source target even if a file or directory already exists.

File download ¹
 Download a file if it does not exit, using curl with a fallback on wget

File enforce content ¹
 This is a bundle to enforce the content of a file

File ensure block in section ¹
 This is a bundle to ensure that a section contains exactly a text block

File ensure block present ¹
 This is a bundle to ensure that a text block is present in a specific location

File ensure key -> value present ¹
 Ensure that the file contains a pair of "key separator value"

File ensure key-value in INI section ¹
 This is a bundle to ensure that a key-value pair is present in a section in a specific location. The objective of this method is to handle INI-style files.

File ensure keys -> values present ¹
 Ensure that the file contains all pairs of "key separator value", with arbitrary separator between each key and its value

File ensure line in INI section ¹
 This is a bundle to ensure that a line is present in a section in a specific location. The objective of this method is to handle INI-style files.

File ensure line in XML section ¹
 This is a bundle to ensure that a line is present in a tag in a specific location. The objective of this method is to handle XML style files. Note that if the tag is not present in the file, it won't be added, and the action will fail.

Group

Group absent ¹
 Make sure a group is absent

Group present ¹
 Create a group

HTTP

HTTP request check status with headers ¹
 Check status of an HTTP URL.

HTTP request sending content with headers ¹
 Make an HTTP request with a specific header

Package

Package absent ¹
 Enforce the absence of a package

Package present ¹
 Enforce the presence of a package

Package state ¹
 Enforce the state of a package

Permissions

Permissions (non recursive) ¹
 Set permissions on a file or directory (not recursively)

Permissions (recursive) ¹
 Verify if a file or directory has the right permissions recursively

Schedule

Schedule Simple ¹
 Trigger a repaired outcome when a job should be run

Schedule Simple Catchup ¹
 Trigger a repaired outcome when a job should be run

Schedule Simple Nodups ¹
 Trigger a repaired outcome when a job should be run

Oups !

Gestion avec GIT et retour arrière

▼ 274 2017-05-23 18:24 admin Directive modified

Directive overview:

- Directive ID: common-root
- Name: Common

Policy parameters changed:

- Differences:

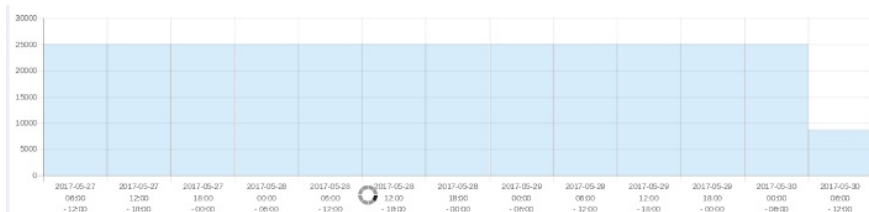
```
<section name="sections">
<section name="Binaries update"> </section>
<section name="CRON Daemon"> </section>
<section name="Log system for reports"> </section>
<section name="Process checking"> </section>
<section name="Red Button"> </section>
<section name="Security parameters"> </section>
<section name="Update"> </section>
<section name="common">
<var name="OWNER">${rudder.node.admin}</var>
<var name="POLICYSERVER">celebrimbor.in.ac-versailles.fr</var>
<var name="POLICYSERVER_ADMIN">root</var>
<var name="POLICYSERVER_ID">root</var>
<var name="UUID">${rudder.node.id}</var>
<section name="authorizedNetworkSection">
<var name="ALLOWEDNETWORK">172.31.136.64/26</var>
</section>
<section name="authorizedNetworkSection">
<var name="ALLOWEDNETWORK">172.31.143.64/26</var>
</section>
<section name="authorizedNetworkSection">
<var name="ALLOWEDNETWORK">192.168.234.64/27</var>
</section>
<section name="authorizedNetworkSection">
<var name="ALLOWEDNETWORK">192.168.226.224/27</var>
</section>
<section name="authorizedNetworkSection">
<var name="ALLOWEDNETWORK">172.31.143.16/16</var>
</section>
+ <section name="authorizedNetworkSection">
+ <var name="ALLOWEDNETWORK">192.168.226.192/27</var>
+ </section>
</section>
<section name="ncf_Initialization"> </section>
```

Directive Common modified

Rollback

Restore configuration policy to before after this change

Machine à remonter le temps



Changes during period 2017-05-30 06:00 - 12:00 (selected in graph above)

Execution Date	Node	Directive	Component	Value	Message
2017-05-30 06:00	elearning-dafco-1.in.ac-versailles.fr	d_remoteaccess_cles_ssh_tice	SSH key	odesport	SSH key "odesport" for user odesport was repaired
2017-05-30 06:00	elearning-dafco-1.in.ac-versailles.fr	d_remoteaccess_cles_ssh_tice	SSH key	odesport-fixe	SSH key "odesport-fixe" for user root was repaired
2017-05-30 06:00	elearning-dafco-1.in.ac-versailles.fr	d_remoteaccess_cles_ssh_tice	SSH key	odesport	SSH key "odesport" for user root was repaired
2017-05-30 06:00	elearning-dafco-1.in.ac-versailles.fr	d_remoteaccess_cles_ssh_tice	SSH key	odesport-fixe	SSH key "odesport-fixe" for user odesport was repaired
2017-05-30 06:00	elearning-dafco-1.in.ac-versailles.fr	d_download-commun-debian-ubuntu_syslog-ng	Copy file	config/syslog-ng.conf	The content or permissions of the file(s) has been repaired

Inventaires serveurs

RUDDER Status Documentation admin

Nodes

Filter

Node name	Machine type	OS name	OS version	OS SP	Policy Mode	Compliance	Last seen
aragon0.in.ac-versailles.fr	Physical	Debian	8.7	N/A	Enforce	100%	2017-05-29 11:58
aragon2.in.ac-versailles.fr	Physical	Debian	8.7	N/A	Enforce	100%	2017-05-29 11:57
aragon3.in.ac-versailles.fr	Physical	Debian	8.7	N/A	Enforce	100%	2017-05-29 11:57
aragon4.in.ac-versailles.fr	Physical	Debian	8.7	N/A	Enforce	100%	2017-05-29 12:01
aragon5.in.ac-versailles.fr	Physical	Debian	8.7	N/A	Enforce	100%	2017-05-29 12:00
aragon6.in.ac-versailles.fr	Physical	Debian	8.7	N/A	Enforce	100%	2017-05-29 12:00
aragon7.in.ac-versailles.fr	Physical	Debian	8.7	N/A	Enforce	100%	2017-05-29 11:59
cache-dce-1.in.ac-versailles.fr	Virtual	Debian	8.8	N/A	Enforce	100%	2017-05-29 11:57
cache-dce-2.in.ac-versailles.fr	Virtual	Debian	8.8	N/A	Enforce	100%	2017-05-29 11:58
carto.in.ac-versailles.fr	Virtual	Debian	7.11	N/A	Enforce	100%	2017-05-29 11:57
celebrimbor.in.ac-versailles.fr	Virtual	Debian	8.8	N/A	Enforce	100%	2017-05-29 12:00
oms-dalco-1.in.ac-versailles.fr	Virtual	Debian	8.6	N/A	Enforce	100%	2017-05-29 11:58
dis-quarr-1.in.ac-versailles.fr	Virtual	Debian	8.8	N/A	Enforce	100%	2017-05-29 12:01
dis-quarr-2.in.ac-versailles.fr	Virtual	Debian	8.8	N/A	Enforce	100%	2017-05-29 11:57
docker-srv-1.in.ac-versailles.fr	Virtual	Debian	8.6	N/A	Enforce	100%	2017-05-29 11:57
docker-srv-2.in.ac-versailles.fr	Virtual	Debian	8.6	N/A	Enforce	100%	2017-05-29 11:56

Rudder 4.1.3
© Normation 2017

Inventaires matériels

Node: aragon0.in.ac-versailles.fr (last updated 2017-05-29 11:24)

Summary Compliance reports **Hardware** File systems Network interfaces Software Environment Processes Virtual machines Properties

Technical logs Settings

BIOS

Controllers

Memory

Ports

Processors

Slots

Sound

Storage

Video

Show 25 entries Filter

Name	Editor	Version	Release Date
PowerEdge M620	Dell Inc.	2.5.4	2016-01-27 00:00

Showing 1 to 1 of 1 entries

First Previous 1 Next Last

Node: aragon0.in.ac-versailles.fr (last updated 2017-05-29 11:24)

Summary Compliance reports **Hardware** File systems Network interfaces Software Environment Processes Virtual machines Properties

Technical logs Settings

BIOS

Controllers

Memory

Ports

Processors

Slots

Sound

Storage

Video

Show 25 entries Filter

Name	Description	Size	Firmware	Manufacturer	Model	Serial	Type	Quantity
ade32x0	SAS	279 GB		SFAGATE	ST9300433SS		dsk	1
ade52s1	SAS	279 GB		SEAGATE	ST9300433SS		dsk	1
sda	SCSI	286 GB	212	DELL	PERC1310		dsk	1
sd1	SCSI	10.2 TB	0602	COMPELNT	CompellentV1		dsk	1
sd2	SCSI	10.2 TB	0802	COMPELNT	CompellentV1		dsk	1
sd3	SCSI	10.2 TB	0602	COMPELNT	CompellentV1		dsk	1
sd4	SCSI	10.2 TB	0602	COMPELNT	CompellentV1		dsk	1
ST9300433SS	SAS	273 GB	YSFC	Seagate	ST9300433SS	6XNZWC/D	dsk	1

Showing 1 to 8 of 8 entries

First Previous 1 Next Last

Inventaires logiciels

Match the criteria below with this operand. AND OR

Software =

Node name	Machine type	OS name	OS version	OS SP	Policy Mode	Compliance	Last seen
cms-dalco-1.in.ac-versailles.fr 	Virtual	Debian	8.8	N/A	Enforce 	100%	2017-05-30 10:24
clearing-dalco-1.in.ac-versailles.fr 	Virtual	Debian	8.6	N/A	Enforce 	100%	2017-05-30 10:25
fitoic-srv-1.in.ac-versailles.fr 	Virtual	Debian	8.8	N/A	Enforce 	100%	2017-05-30 10:23
ged-dalco-1.in.ac-versailles.fr 	Virtual	Debian	stretch/sid	N/A	Enforce 	100%	2017-05-30 10:26
jeoria-srv-1.in.ac-versailles.fr 	Virtual	Debian	7.11	N/A	Enforce 	100%	2017-05-30 10:23
jeoria-srv-2.in.ac-versailles.fr 	Virtual	Debian	7.11	N/A	Enforce 	100%	2017-05-30 10:23
manne-2.in.ac-versailles.fr 	Virtual	Debian	8.6	N/A	Enforce 	100%	2017-05-30 10:23
manne-3.in.ac-versailles.fr 	Virtual	Debian	8.8	N/A	Enforce 	100%	2017-05-30 10:26
manne-5.in.ac-versailles.fr 	Virtual	Debian	8.5	N/A	Enforce 	100%	2017-05-30 10:22
mailtest-srv-1.in.ac-versailles.fr 	Virtual	Debian	8.6	N/A	Enforce 	100%	2017-05-30 10:26

Inventaires env/process/vm

Make a query base search and display node details

Node: aragon0.in.ac-versailles.fr (last updated 2017-05-29 11:24)

Summary Compliance reports Hardware File systems Network interfaces Software Environment Processes Virtual machines Properties									
Technical logs Settings									
Show 25	entries							Filter	
Name	Type	SubSystem	Uuid	Status	Owner	# Cpu	Memory		
cms-dalco-1			a9587f23-7d9c-4c1e-8c19-194e06c4c526	running		1	8192		
docker-srv-2			92c383aa-7f88-4961-bcc8-f616cf430873	running		1	4096		
clearning-dalco-1			64ddf53-b8fb-4c93-80c4-3949473bc25f	running		1	8192		
ged-dalco-1			6057d779-2930-44f5-aa91-f52296259333	running		1	8192		
gliteb-omnibus			c5db0033-753b-4660-a4e9-263fec44b609	running		1	12208		
groupoffice-3			bd9fbca3-2fa0-4e35-a549-93537f7ebcf6	running		1	1024		
haproxyssl-1			40fb1eb7-960b-4417-8cd8-90d912546f1e	running		1	4096		
mailtemast-srv-1			471b090c-3889-41b5-9be7-8448a450c706	running		1	4096		
openbroadcast-srv-1			9f55234f-0764-4c17-f9f0-4abf4250c5ad	running		1	4096		
openproject-srv-1			7802fa1c-7cd0-4aa6-9e0f-4a751a004700	running		1	4096		
postgras-1			59c66c54-558c-4d94-8b67-edc3d4ea24d9	running		1	47096		
spp-srv-3			c76b6b50-b445-4217-b67a-f0d18d1456ef	running		1	12288		
spp-srv-5			75ba058a-30a0-4083-85f3-ae0ac954f6b8	running		1	10196		
sqj-dalco-2			c88cc98a-0c1c-4911-bc01-dc4e934ffe77	running		1	4096		
sylvearbe-3			1f36ac2b-86f4-4f79-95f5-73d22c69cd7e	running		1	2049		

Showing 1 to 15 of 15 entries

[First](#)
[Previous](#)
[1](#)
[Next](#)
[Last](#)

Résumé

- Les configurations proviennent de directives qui sont elles basées sur des techniques fournies par rudder, des techniques personnalisées (meta techniques) existent.
- Une fois une directive créée elle est assignée à un groupe de machines l'on appelle cela une "règle"
- les configurations peuvent être mises en mode :
 - "audit", cela vous dira ce qui n'est pas conforme mais ne le corrige pas, pratique pour l'intégration d'un existant
 - "forcé" pour tout remettre à plat tout le temps
- Dans les 2 cas des alertes visuelles, des changements qui auraient été poussés, des changements effectués
- Tracabilité du changement -> Git dans le texte, possibilité donc de revenir à la configuration précédente
- Rudder propose une API récupérée par Rundeck/Itop
- Pour les barbus avec ou sans barbes, l'on peut envoyer les XML des Directives, Groupes, Règles via un git



Envoi des résultats Runderck dans Mattermost

- via des webhooks entrants/sortants

Le canal des erreurs

webhook BOT 4:10 AM

Execution #282 816 of job / Sauvegarde Xtrabackup

Job Name / Sauvegarde Xtrabackup	Project Sauvegarde
Status Failed	Execution ID #282 816
Failed Nodes mariadb-galera-tice-3.in.ac-versailles.fr	

DS
Dsi

ds
dsi-ce

DS
Dsi S...

ds
dsi-tice

ur
urDa...

Ve
Velle...

@nschont
dsi-tice

- Edu-scenari
- Edu-sondage
- Edu-visio
- Erreurs
- Gitlab
- Hors-sujet
- Joomla
- Mattermost
- Ordonnanceur Rundeck
- Piwik
- sacoche
- sauvegarde**
- SPIP
- Supervision
- Wordpress
- Plus...

CANAUX PRIVÉS +

MESSAGES PRIVÉS



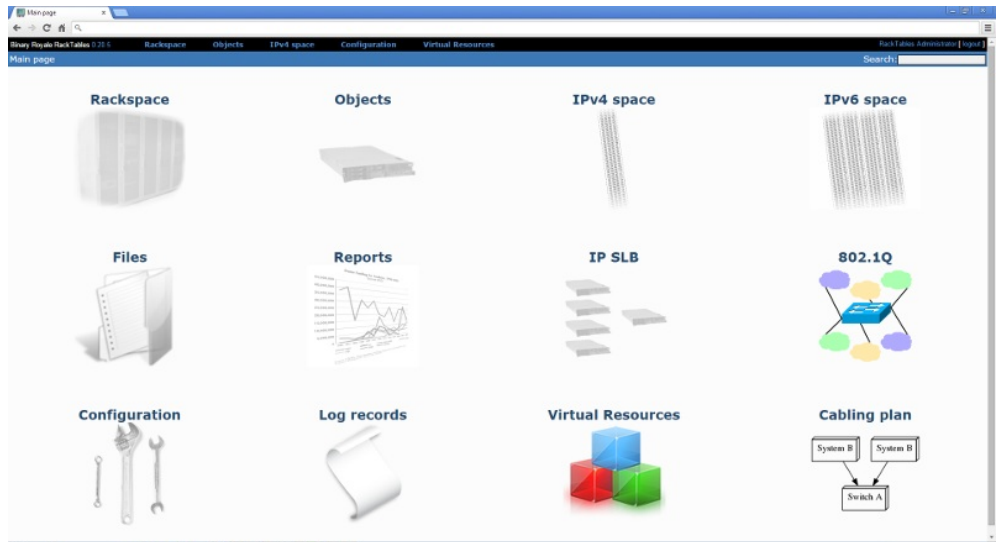
Import des inventaires Rudder, Esxi...

Pages: 1 2 3 4 ... 8 30 éléments par page

Serveur	Organisation	Statut	Criticité	Site	Marque	Modèle	Numéro de série
5 view svc code:39105854047	ISED	production	basse	Lesseps	non défini	non défini	
5 view svc code:39114580015	ISED	production	basse	Lesseps	non défini	non défini	
app-admin	ISED	production	basse	Lesseps	Dell	PowerEdge M610	
app-loc-3	ISED	production	basse	Lesseps	Dell	PowerEdge M610	
app-nat-1	ISED	production	basse	Lesseps	Dell	PowerEdge M610	
app-nat-2	ISED	production	basse	Lesseps	Dell	PowerEdge M610	
app1_sconet	ISED	production	basse	Lesseps	Dell	PowerEdge M610	
app1-ts	ISED	production	basse	Lesseps	non défini	non défini	
app2_sconet	ISED	production	basse	Lesseps	Dell	PowerEdge M610	
app2-ts	ISED	production	basse	Lesseps	non défini	non défini	
app3_sconet	ISED	production	basse	Lesseps	Dell	PowerEdge M610	
app4_sconet	ISED	production	basse	Lesseps	Dell	PowerEdge M610	
aragon0	ISED	production	basse	non défini	Dell Inc.	non défini	G2V5YX1
aragon2	ISED	production	basse	non défini	Dell Inc.	non défini	93V5YX1
aragon3	ISED	production	basse	non défini	Dell Inc.	non défini	33V4YX1
aragon4	ISED	production	basse	non défini	Dell Inc.	non défini	G2V0YX1
aragon5	ISED	production	basse	non défini	Dell Inc.	non défini	D2V1YX1
aragon6	ISED	production	basse	non défini	Dell Inc.	non défini	23V5YX1
aragon7	ISED	production	basse	non défini	Dell Inc.	non défini	DM50422

RackTables

La vue d'ensemble



Vue de baies

Location	Row	Racks
Salle De Machine A	Allée 1	 Baie 29 Baie 30 Baie 31 Baie 32 Baie 33
Salle De Machine A	Allée 2	 Baie 24 Baie 25 Baie 26 Baie 27 Baie 28
Salle De Machine A	Allée 3	 Baie 18 Baie 19 Baie 20 Baie 21 Baie 22 Baie 23

Vue d'une baie

Rack diagram

 Allée 1 : Baie 29 

Front	Interior	Back
42		
41		
40	stand-ouca-ous	
39		
38		
37		
36	db-2-3 canopus	
35		
34	db-2-6	
33		
32		
31	straxia	
30		
29	supernitax	
28		
27	ms2	
26		
25	ms2	
24	KVM Switch B29	
23	nphx-e-ng_2	
22		
21	KVM-B29	
20		
19		
18		
17		
16	nphx-e-ng_1	
15		
14		
13		



Vue de clusters

Clusters (3)

Cluster	Hypervisors	Resource Pools	Cluster VMs	RP VMs	Total VMs
VersaillesA	16	0	300	0	300
VersaillesB	6	0	38	0	38
Vrs-test	0	0	0	0	0

Hypervisors (24)

Hypervisor	Cluster	VMs
esx-blade-1.mgt.in.ac-versailles.fr	VersaillesA	0
esx-blade-10.mgt.in.ac-versailles.fr	VersaillesA	0
esx-blade-11.mgt.in.ac-versailles.fr	VersaillesA	0
esx-blade-12.mgt.in.ac-versailles.fr	VersaillesA	0
esx-blade-13.mgt.in.ac-versailles.fr	VersaillesA	0
esx-blade-14.mgt.in.ac-versailles.fr	VersaillesA	0
esx-blade-15.mgt.in.ac-versailles.fr	VersaillesA	0
esx-blade-16.mgt.in.ac-versailles.fr	VersaillesA	0

Virtual Switches (3)

Name
DSwitch-ISCSI
DSwitch0
DSwitch1

Vue des réseaux

networks (157)

auto-collapsing at threshold 25 ([expand all](#) / [collapse all](#))

prefix	name/tags	capacity	routed by
10.78.0.0/24		256	
172.27.128.0/24		256	
172.27.129.0/25		128	
172.27.129.128/25		128	
172.27.130.0/24		256	
172.27.131.0/24		256	
172.27.132.0/24		256	
172.27.133.0/25		128	
172.27.133.128/27		32	
172.27.133.160/27		32	
172.27.134.0/24		256	
172.27.135.0/25		128	
172.27.136.0/24		256	

La liste des objets

Objects (644)

Common name	Type	Visible label	Asset tag	Row/Rack or Container
0025WGT9 WAN-ONS-1	Network chassis		Allée 3/Baie 20	
1K3QRC1	KVM switch	Switch kvm B27	Allée 2/Baie 27	
1XATTD NEW	VM		esx-smb-toip-1.mgt.in.ac-versailles.fr	
3750	Network switch	SWITCH	SMA-BA-3	Coeur du réseau/Baie A
5 view svc code:39105854047	Server		Allée 3/Baie 22	
5 vieix svc code:39114580015	Server		Allée 3/Baie 22	
78858 KAZC VERS DPM06	Network security		Allée 3/Baie 20	
92KQRC1	KVM switch		Allée 3/Baie 18	
aca-pic	VM		VersaillesA	
ACM1A	VM		esx-sma-toip-1.mgt.in.ac-versailles.fr	
ACM1B	VM		esx-smb-toip-1.mgt.in.ac-versailles.fr	
adhara	VM		VersaillesA	
admin-jb-1	VM		VersaillesA	
admin-wl12	VM		VersaillesA	
admin-wl12-2	VM		VersaillesA	
admt	VM		VersaillesA	
AES	VM		esx-smb-toip-1.mgt.in.ac-versailles.fr	
airw-cc.pp.in.ac-versailles.fr	VM		VersaillesB	

Liste de courses

déjà installé mais pas intégrée

- CachetHQ
 - Suivi des interventions/incidents via une "timeline"
 - Possibilité de s'abonner à des services via Rss/courriel
- Netdisco
 - Découverte du réseau
- Dell OpenManage Essential
 - Gestion des mises à jours DELL
- Huggins
 - Trigger / agrégateur de requêtes (exemple : Zapier)

QUESTIONS ?